

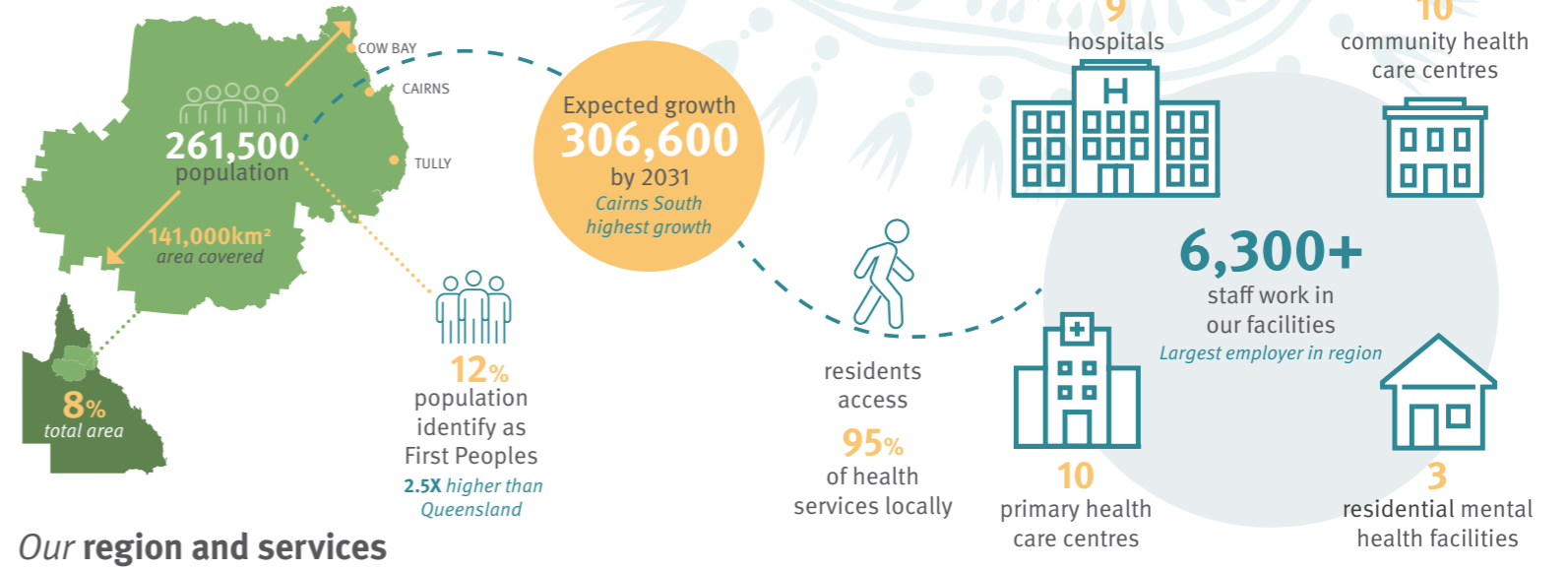
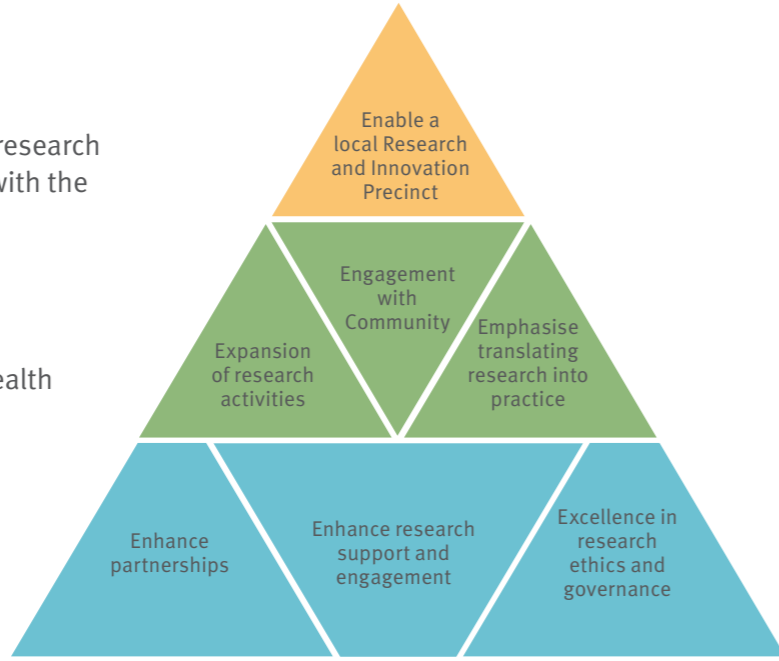
Research Excellence Strategic Plan 2024–2029

Strategic Vision

Striving for excellence and innovation in research to enhance health care provision to and with the communities of Far North Queensland.

Research Priorities

- Aboriginal and Torres Strait Islander health
- Tropical health and medicine
- Health service research
- Equity of access to health care



Enhance partnerships	Enhance research support and engagement	Excellence in research ethics and governance	Expansion of research activities	Engagement with Community	Emphasise translating research into practice	Enable a local Research and Innovation Precinct
<ul style="list-style-type: none"> • Facilitate opportunities for working with academic and research partners through appointment of staff with dedicated time for research as part of their role description, at a level that will increase research in the organisation. • Increase conjoint appointments across the clinical professions with the academic partners in the Far North and elsewhere. • Facilitate research partnerships and collaborations with First Nations research. • Be proactive in leading collaborative research with our strategic, academic, and professional partners to improve health outcomes in the tropical north of Australia. 	<ul style="list-style-type: none"> • Build on partnerships with Tropical Australian Academic Health Centre (TAAHC), such as the Study Design, Epidemiology and Biostatistics Support Service (SEBSS). • The provision of academic support through: <ul style="list-style-type: none"> › The above conjoint appointments across the professional streams › Establishing research fellowships in the professional streams to encourage academic pathways. › Establishing formal research support structures across the organisation. • Increase the educational and training opportunities for prospective researchers. • Increase and improve organisational research capacity with a focus on the Aboriginal and Torres Strait Islander workforce. • Leverage the digital hospital to improve data set collection. • Showcase research from across the CHHHS. • Promote interprofessional research. 	<ul style="list-style-type: none"> • Embrace efficient electronic practice with the establishment of end-to-end electronic preparation and submission to the Human Research Ethics Committee (HREC). • Integrate the ethics and research governance systems to deliver efficiencies. • Establish effective systems to manage multi-annual grants across financial years. 	<ul style="list-style-type: none"> • Establish an academic community to lead, promote and supervise research and education fellowships and postgraduate students. • Consolidate research and attract further expertise to develop a suite of Centres of Excellence, initially in the four research priority areas. • Develop interprofessional and crossdisciplinary research networks across preventative and clinical service streams. • Build on the capability and capacity of the Tropical Australia Academic Health Centre. • Increase research capacity in rural facilities. • Attract additional funding from the Far North Queensland Hospital Foundation, and internal and external grants. • Increase research visibility throughout the CHHHS and highlight research achievements. 	<ul style="list-style-type: none"> • Increase community co-design, participation and evaluation of research. • Ensure governance of research through community members on the Human Research Ethics Committee. • Explore and examine the establishment of an Aboriginal and Torres Strait Islander review group. 	<ul style="list-style-type: none"> • Statewide, national and international dissemination of locally developed, evidence-driven models of care and research. • Develop a suite of research training opportunities and mentoring/support networks to encourage the next generation of thought leaders. • Host interprofessional research symposia and acknowledge translation into practice. • Promote the Clinical Research Unit to attract more industry-sponsored clinical trials and competitive research funding. 	<ul style="list-style-type: none"> • Establish a physical research and education facility close to the Cairns Hospital with collaborative space for our partners. • Support research on the conditions that matter to our Far North communities, including translational research, supporting evidence to practice. • Create resources to build knowledge and understanding of our unique tropical health environment to attract and retain our clinician researchers.



Cairns and Hinterland Hospital and Health Service

DECEMBER 2023

