



**Professional Responsibility**

- › Professional Nursing and Midwifery Oversight
- › Chair of Nursing Leadership Committee

Executive Support Office

**Nursing Director Strategy and Workforce**

**SCOPE**

- › Business planning framework
- › Workforce clinical support
- › Nursing resource unit
- › Nurse navigation

**Nursing Director Education and Research**

**SCOPE**

- › Skills centre
- › Nursing and midwifery education
- › Research

**Infection Control Clinical Nurse Consultant**

**SCOPE**

- › Support practices for prevention and management of healthcare associated infection
- › Staff VPD
- › Manage occupational exposures
- › Education and consultancy in relation to infection prevention control



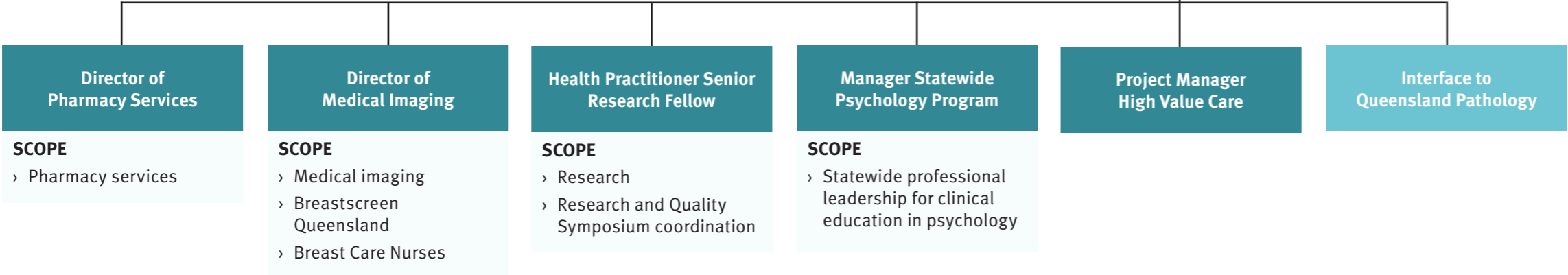
**Professional Responsibility**

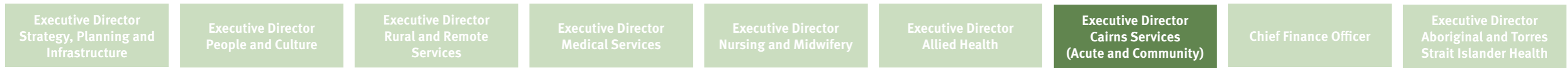
- › Professional Governance for Allied Health
- › Chair of Allied Health Executive Committee
- › Chair Allied Health Credentialing Committee
- › Allied Health research and Education
- › HP/PO Award oversight
- › Allied Health Clinical Education
- › Liaison for Allied Health Professions Office Queensland

Executive Support Office

Business Manager

Business Support Office





Executive Support Office

**Service Director of Integrated Medicine, Child and Youth Services**

- SCOPE**
- › Medicine 1
    - » General medicine
    - » Medical assessment Unit
    - » Gastroenterology
    - » Infectious Diseases
    - » AMS (anti-microbial stewardship)
    - » Home Antibiotic IV Therapy
    - » Dermatology
    - » Rheumatology
    - » Immunology
    - » Hospital in the home
  - › Medicine 2
    - » Endocrinology and Diabetes
    - » Cardiology
    - » Cancer care and Haematology
    - » Thoracic
    - » Renal
  - › Older Persons, Sub-Acute and Rehab (OPSAR)
    - » Rehabilitation and Stroke
    - » Neurology
    - » Gordonvale Hospital
    - » Interim care
    - » Palliative care

- » Older Person's Integrated Health Service
- » OPERA and Dementia/Delirium
- » Transitional care program
- » Aged Care Assessment team and Memory Service
- » Adult community health
- » Commonwealth home support programme
- › Medical inpatients and outpatients
- › Child and youth services
  - » Paediatric/ adolescent acute and extended care
  - » Special care nursery
  - » Child and Youth Community team
  - » Child and youth family health
  - » Child protection liaison unit
  - » Child development service
  - » CYFS Access Unit

**Service Director of Intensive Care, Women's and Perioperative Services**

- SCOPE**
- › Surgical services
    - » General surgery
    - » Plastics and reconstructive service
    - » Vascular surgery
    - » ENT surgery
    - » Urology
    - » Ophthalmology
    - » Maxillofacial
    - » Surgical inpatient wards
    - » Surgical and Orthopaedic clinics
  - › Perioperative services
    - » Anaesthetics
    - » Operating theatre
    - » Pre-admission
    - » PACU
    - » Day surgery
    - » Post-operative surgical unit (POSU)
    - » Central sterilising unit
    - » Elective surgery coordination
  - › Orthopaedics
    - » Trauma coordination
    - » Inpatient ward
    - » Outpatient clinics
  - › Intensive care unit
    - » Organ donation
  - › Patient Administration Service Unit (CHHHS wide)
    - » Scheduled Care Unit
    - » BPIOs
  - › Outpatient Waiting List Coordinator
  - › Women's Health
    - » Maternity (Birth suite and Antenatal)
    - » Obstetrics and Gynaecology
    - » Mobile women's health unit
    - » Outpatient clinics
    - » Women's medical outreach

**Service Director of Mental Health and Alcohol Tobacco and Other Drugs Service**

- SCOPE**
- › Acute and Sub-Acute beds based services
  - › Adult and older persons community mental health services
  - › Rural and remote and indigenous mental health services
  - › Child, adolescent and youth mental health services
  - › Alcohol tobacco and other drug and forensic mental health services
  - › MHATODS corporate governance support unit
  - › MHATODS clinical governance support unit
  - › Access services

**Director Allied Health**

- SCOPE**
- › Allied health Cairns services
    - » Occupational therapy
    - » Social work
    - » Speech pathology
    - » Psychology
    - » Nutrition and dietetics
    - » Physiotherapy
    - » Clinical measurements
  - › Allied health teams (professional reporting line only)
    - » Atherton
    - » Mareeba
    - » Innisfail
    - » Tully
    - » Babinda
  - › Interpreter services
  - › Pastoral Care

**Director of Medical and Emergency Services**

- SCOPE**
- › Medical staff professional lead
  - › Clinical governance medical lead
  - › Cairns Services medical lead
  - › Junior medical workforce Unit
    - » Interns
    - » RMOs
    - » PHOs
    - » Registrars
  - › Emergency Services
    - » Cairns Hospital Emergency Department
    - » Emergency medicine education training program (EMET)

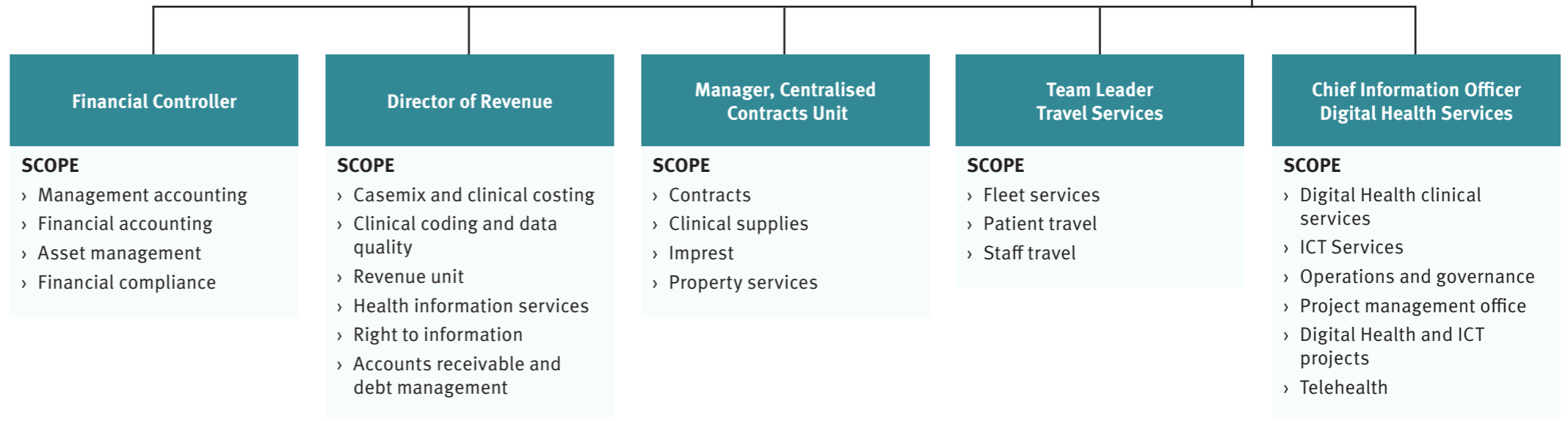
**Director of Nursing and Midwifery**

- SCOPE**
- › Nursing and Midwifery professional lead
  - › Patient Access
    - » Nurse Manager resource allocations
    - » PACH Medical coordination
    - » PACH QAS coordination
    - » Bed management
    - » Transit lounge
    - » Interfacility coordination
    - » Community hospital interface program
    - » Education, Research and Quality

**Director of Business Improvement and Support Services**

- SCOPE**
- › Senior Business Improvement Officer
  - › Disaster, Emergency and Business Continuity
    - » Disaster and Emergency Management
    - » Business Continuity
    - » Training and Education
  - › Operational Services
    - » Support Services (Cairns and Gordonvale)
    - » Food Services
    - » Security
    - » Switch
  - › Facility Management
    - » Cairns Hospital
    - » Cairns North Community Health Centre
    - » Smithfield Community Health Centre
    - » Edmonton Community Health Centre
    - » Cairns South Health Facility







Executive Support Office

Director  
Aboriginal and Torres Strait  
Islander Health

Health Worker  
Cluster Coordinator

Indigenous MHATODS  
Cluster Coordinator

Health Worker  
Cluster Coordinator

**Professional Responsibility**

**PROFESSIONAL RESPONSIBILITY**

- › Aboriginal and Torres Strait Islander Health Worker and Hospital Liason Officer oversight
- › Inc co-chair Aboriginal and Torres Strait Islander Health Worker Committee

**SCOPE**

- › Policy, planning and advice
- › Provision of high level strategic and operational advice
- › Cultural capability
  - » Mandatory Cultural Capability Training
  - » Framework implementation
- › Stakeholder engagement
- › Representation on state-wide forums